



the **play inspection** company

Annual Inspection

Broadbridge Heath Parish Council

Charrington Way Play Area

Charrington Way, Broadbridge Heath, West Sussex,
RH12 3TL



API Associate

Unit 5, Glenmore Business Park, Blackhill Road, Poole, Dorset, BH16 6NL
t- 01202 590675 e- info@playinspections.co.uk

www.playinspections.co.uk



RPII Inspection Methodology

This document outlines the RPII position on inspections undertaken by the Inspectors listed on the RPII Register of Inspectors for Indoor Annual, Outdoor Annual, Outdoor Operational and Outdoor Routine.

Inspections are undertaken with reference to the standards listed in this preamble only; where no date for the standard is given it the date of the standard will be that current at the time of inspection with the exception of where overlap periods are granted by the standards committee when standards are updated. The information contained in reports is provided to assist the owner/operator in fulfilling their responsibilities as detailed in the relevant standard. Other standards referenced within the listed standards do not form part of the inspection.

The following standards are relevant to all installations of equipment that are publicly accessible to users; this would include public parks, pay and play parks, schools, nurseries, public houses, holiday parks, indoor play centres, farm parks etc. All equipment used or employed in publicly accessible areas should meet with the requirements of the relevant standards (listed below);

BS EN 1176 Parts 1, 2, 3, 4, 5, 6, 10 & 11 Playground equipment intended for permanent installation outdoors & indoors.

BS EN 1176 Part 7 - 'Guidance on Installation, Inspection, Maintenance and Operation' (this document gives guidance to the owners/operators of the facility on the installation, inspection, maintenance and operation of playground equipment, including ancillary items).

Domestic play equipment falls outside of the scope of BS EN 1176 and has its own standard (BS EN 71 – Safety of Toys). Where domestic equipment can be identified this will be acknowledged in the report but any comments concerning compliance within the inspection will still refer to BS EN 1176.

Other equipment that is not clearly identified as unsupervised or domestic (natural play, self-build equipment etc.) will be assessed for compliance with the relevant standard listed below:

BS EN 15312 - Free access multi-sports equipment

BS EN 14974 - Skateparks

BS EN 16630 - Permanently installed outdoor fitness equipment

BS EN 16899 - Parkour equipment (plus RPII/API guidance notes)

Annual and Post Installation inspections will take into consideration compliance with current standards and defects related to wear and vandalism. Items not listed in the report have not been included in the inspection. The inspection will cover the playground equipment and the active area up to 3.0 metres around, or the fence line if closer.

Operational inspections only take into consideration defects related to wear and vandalism. Routine visual inspections (if undertaken) relate only to the most obvious defects such as broken or missing parts, vandalism and issues created by severe weather conditions (the intention is to identify hazards created by storm damage).

The inspection is non-dismantling, non-destructive and does not include for any structural, toxicology or impact assessments defined in the standard; however, the inspector will undertake a manual test for stability and if equipment fails under manual load, or any other hazard is identified as an unacceptable risk, the owner/operator will be notified as soon as practicably possible.

The inspector will access all standing surfaces as necessary on the equipment and assess all parts up to 2.5m above the standing surface. Where it is not possible to access parts of the equipment without employing an alternative means of access the report will record the action required by the owner/operator to ensure the continued safe use of the equipment. Ancillary equipment will be assessed using the inspector's knowledge and experience of the standards named in this document to ensure as far as is reasonably practicable the continued safe use of the items concerned. The owner/operator is responsible for the overall safety of the equipment and area. Inspectors who are trained to use ladders may use them where it is safe to do so, but if members of the public are present on-site ladders may not be used to access the equipment.

The inspector will not undertake any of the following works unless specifically agreed in writing at the time of order:

Checking the depth and underlying structural integrity of any surface areas and/or carrying out any testing of impact absorbing properties of any surfaces. The identification of any corrosion, rot or other deterioration in any apparatus or equipment other than by an external inspection or the inspection of any equipment (or part thereof) that is underground. Tightening any bolts, hinges or other fixing devices on any apparatus or equipment. Assessing or inspecting any electrical installations contained on any site and/or apparatus and/or equipment. Assessing or inspecting any water supplies and/or water features and/or any associated computerised systems (including carrying out any programming).

Where planting or trees are mentioned in the report no aboricultural or horticultural assessments of toxicity, suitability or condition are undertaken; the owner/operator should have suitable inspections provided by a competent person.

The owner/operator should have a 'design risk assessment' provided by the manufacturer/designer of the area for the equipment and location in which the facility is installed.

The operator is responsible for managing risks of their provision and is required by law to carry out a 'suitable and sufficient assessment' of the risks associated with a site or activity and this inspection shall be considered as contributing to the operator's discharge of this responsibility.

The details contained within the report are a snapshot of the condition at the time of inspection only and subsequent events may affect the condition of the facility. Suggested remedial actions are based on the knowledge and experience of the inspector and/ or that of the inspection company. The owner/operator should seek the advice of the manufacturer or a competent person at all times when undertaking repairs and/or modifications to equipment.

A full copy of the Play Inspection Company Ltd. Terms & Conditions is available on our website (www.playinspections.co.uk)

Table 1

The operator is responsible for following the guidance of the relevant standards. The standards give guidance on the installation, inspection, maintenance and operation of the various types of facilities. The inspection guidance is listed in Table 1, with an indication of which parts will be included in an RPII Annual or Post-Installation Inspection. The relevant standards also contain additional parts which the operator should follow.

Inspection recommendations of relevant standards Refer to relevant standards for full text	Annual Main	RPII Annual Outdoor/ Fully enclosed Inspection
6.1 and 6.2 c) Inspect and maintain in accordance with the manufacturer's instructions (see note 1)	✓	✗ [1]
6.2 a) Identify obvious hazards	✓	✓
6.2 b) Check for operation, stability and wear (see note 2)	✓	✓ [2]
6.2 b) Check sealed for life parts	✓	✗
6.2 b) Check for cleanliness, equipment ground clearances, ground surface finishes, exposed foundations, sharp edges, missing parts, excessive wear (of moving parts) and structural integrity (see note 2)	✓	✓ [2]
6.2 c) Overall levels of safety of equipment	✓	✓
6.2 c) Overall levels of safety of foundations (see note 2)	✓	✓ [2]
6.2 c) Overall levels of safety of surfaces (see note 3)	✓	✓ [3]
6.2 c) Compliance with the relevant parts of the standard (see note 4)	✓	✓ [4]
6.2 c) Undertaking the responsibility of the operator's periodic, systematic assessment of the effectiveness of all their safety measures (BS EN 1176-7, 8.2.1)	✓	✗
6.2 c) Effects of weather	✓	✓
6.2 c) Presence of rot or corrosion (see note 2)	✓	✓ [2]
6.2 c) Assessment of repairs made/added or replaced components (see note 5)	✓	✓ [5]
6.2 c) Excavation/dismantling/additional measures	✓	✗
6.3.1 Assessment of glass reinforced plastics (see note 6)	✓	✓ [6]
6.3.2 Maintenance of one post equipment (see note 2)	✓	✓ [2]

NB The clause numbers in table 1 are taken from BS EN 1176-7. The content is equally applicable to all other relevant standards listed herein.

[1] Playgrounds contain a range of equipment from different manufacturers and installed over a number of years; operators should implement any guidance provided by the manufacturer. Item specific detail is not readily available to RPII Playground Inspectors, whose report contributes to the operator's overall Annual Main Inspection as detailed in the relevant standards.

[2] A manual test only is undertaken for stability. Wear and instability are only detectable where readily apparent without dismantling or destruction and without the use of tools, excavation or specialist equipment. Rot and corrosion are tested for with a hammer and/or steel rod. Decay in timber may exist which can only be found with specialist equipment.


[3] Only the visible condition and dimensional compliance of surface extent is considered. Neither testing of impact attenuating properties nor measurement of the thickness of bound surfaces are undertaken on RPII annual inspections.

[4] The inspection assesses compliance where this can be tested on site using manual methods without dismantling, destruction and without the use of tools or specialist equipment.

[5] The operator should use manufacturer's recommended parts, or equivalent. We are unable to verify if such parts have been used, and any subsequent change in quality or performance.

[6] Visible glass fibres will be noted in reports. The operator is responsible for repairs or replacement.

Risk Assessment Matrix

			Scores in the report are multiplication factors of Likelihood x Severity					
			Severity>>					
Likelihood	Very High probability, if the situation is not addressed an accident is almost certain.	5	Very High	VL (5)	L (10)	M (15)	H (20)	VH (25)
	High probability an accident is probable without any added factor.	4	High	VL (4)	L (8)	M (12)	H (16)	H (20)
	Moderate probability an incident is foreseeable.	3	Moderate	VL (3)	L (6)	L (9)	M (12)	M (15)
	Some probability, requires a combination of factors to take place.	2	Low	VL (2)	VL (4)	L (6)	L (8)	L (10)
	No significant probability; lightning strike, freak accident.	1	Very Low	VL (1)	VL (2)	VL (3)	VL (4)	VL (5)
				Very Low	Low	Moderate	High	Very High
				1	2	3	4	5
				No injury likely e.g. damaged or soiled clothing, minor bruising, grazes	Minor injury, laceration or bruising requiring first aid only	Injury requiring medical intervention e.g. cuts requiring stitches	Serious injury including concussions or fracture of long bones	Severe injury involving a potential life changing injury or fatality
				Severity>>				
Note 1: The total risk scores included within our reports are a multiplication factor of the calculated Likelihood and Severity of each finding. Both Likelihood and Severity are given a number between 1 - 5 as shown on the matrix above and these two numbers are then multiplied together to give the total risk score that is shown against defects on the report. Total risk scores can be divided in both directions, i.e. a total risk score of 12 could be a Likelihood (3) x Severity (4) or Likelihood (4) x Severity (3).								
Note 2: When we inspect we only see a snapshot of the current condition of the equipment. It is the operators responsibility to ensure that there is a continuing level of maintenance to keep the equipment in good working order and the site fit for use.								

Equipment has been assessed to the following standards where relevant:

BS EN 1176 Parts 1-11 (Playground equipment and surfacing)
BS EN 14974 (Facilities for users of roller sports equipment)
BS EN 15312 (Free access multi-sports equipment)
BS EN 16899 (Parkour Equipment)
BS EN 16630 (Outdoor Fitness Equipment).



Charrington Way Play Area

Inspection Ref: 1140099

Site Ref: 9241

Customer Order: N/A

Inspected: 11-July-2020 - 10:16 by Richard Goodson RPII Annual Inspector

Risk Assessment: 10 Low Risk



Location:

The site is partially overlooked by properties in the local community

Disabled Access:

Some accessible features; an area that presents difficulties to the majority of people with disabilities but in favourable circumstances and certainly in partnership can be accessed.



8 - Low Risk

Item: Site General
Manufacturer: Owner/Operator
Surface Type: N/A
Item Quantity: 1
Equipment Compliance: N/A
Surface Area Compliance: N/A

Total Findings: 2



Finding 1

There are trip hazards present in the play area - Reinstate surrounding surfaces to level to remove the trip points area

Finding 2

It is recommended that Adult Outdoor Fitness equipment is installed a minimum of 25m away from a childrens playground or separated and screened to discourage access by younger children - Monitor use and review risk assessment regularly

5 - Very Low Risk

Item: Sign
Manufacturer: Owner/Operator
Surface Type: N/A
Item Quantity: 1
Equipment Compliance: N/A
Surface Area Compliance: N/A

Total Findings: 1



Finding 1

BS EN 1176 Part 7 recommends that signage shall include the site name / address - Provide additional information



4 - Very Low Risk

Item: Bench
Manufacturer: Owner/Operator
Surface Type: N/A
Item Quantity: 3
Equipment Compliance: N/A
Surface Area Compliance: N/A

Total Findings: 1



Finding 1

This item is satisfactory - no work required -

0 - Risk Assessment not Undertaken

Item: Litter Bin
Manufacturer: Owner/Operator
Surface Type: N/A
Item Quantity: 2
Equipment Compliance: N/A
Surface Area Compliance: N/A

Total Findings: 1



Finding 1

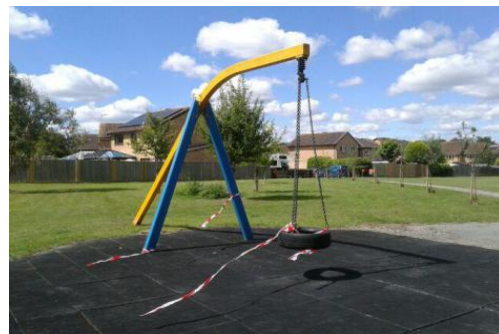
Bins were cordoned off at the time of inspection and the inspector was unable to make a full assessment - Ensure the bin is inspected/emptied as required



5 - Very Low Risk

Item: Single Point Swing - Type 3
Manufacturer: Wicksteed Playgrounds
Surface Type: Rubber Tiles
Item Quantity: 1
Equipment Compliance: No
Surface Area Compliance: Yes

Total Findings: 1



Finding 1

The surfacing dimensions are short and do not meet with the requirements of the current applicable standard - Monitor - no remedial action recommended

6 - Low Risk

Item: 1 Bay 2 Seat (Cradle)
Manufacturer: Sutcliffe Play Limited
Surface Type: Rubber Tiles
Item Quantity: 1
Equipment Compliance: No
Surface Area Compliance: Yes

Total Findings: 2



Finding 1

Bird muck is present on the seats - Clear the muck and maintain

Finding 2

There are caps missing from the underside of the seats - Replace missing caps under the seats



i 10 - Low Risk

Item: Free Standing Slide
Manufacturer: Not Identified
Surface Type: Rubber Tiles
Item Quantity: 1
Equipment Compliance: No
Surface Area Compliance: No

Total Findings: 4



Finding 1

The item fails to meet the requirements of BS EN 1176 Part 1 4.2.7.2 head and neck entrapment in the barriers and/or steps - Monitor - No remedial work recommended

Finding 2

The height of the barrier(s) is insufficient and fails to meet the recommendations of BS EN 1176 Part 1 - Monitor - No remedial work recommended

Finding 3

The surfacing dimensions are significantly short and do not meet with the requirements of the current applicable standard (1500mm required / 700mm provided) - Extend surface area to comply

Finding 4

There is surface corrosion present on the item - Consider treating the item

i 8 - Low Risk

Item: Multi Play (Junior)
Manufacturer: Playdale Playgrounds Ltd
Surface Type: Grass Matrix Tiles
Item Quantity: 1
Equipment Compliance: Yes
Surface Area Compliance: Yes

Total Findings: 2



Finding 1

There is algae or moss on the surface of the equipment - Clean and treat appropriately

Finding 2

The grass mats are silted up and the soil is compacted; this may have an effect on the impact absorbing properties of the surface - Consider HIC testing impact absorbing properties to ensure the correct surface qualities are maintained for the equipment and replace as required



8 - Low Risk

Item: Spinning Pole
Manufacturer: Playdale Playgrounds Ltd
Surface Type: Grass Matrix Tiles
Item Quantity: 1
Equipment Compliance: Yes
Surface Area Compliance: Yes

Total Findings: 1



Finding 1

The grass mats are silted up, the soil is compacted and the area will become very slippery when the soil is wet. -
Reinstate as required

4 - Very Low Risk

Item: Misc Springer
Manufacturer: Playdale Playgrounds Ltd
Surface Type: Grass Matrix Tiles
Item Quantity: 1
Equipment Compliance: Yes
Surface Area Compliance: Yes

Total Findings: 1



Finding 1

This item is satisfactory - no work required -



8 - Low Risk

Item: Waist Twister
Manufacturer: Fresh Air Fitness
Surface Type: Grass Matrix Tiles
Item Quantity: 1
Equipment Compliance: No
Surface Area Compliance: Yes

Total Findings: 2



Finding 1

The deflection of the rotating user station exceeds the maximum 105 degrees required by BS EN 16630 - Monitor - No remedial work recommended

Finding 2

The swinging movement of the item exceeds the maximum 55 degrees from the vertical required by BS EN 16630 - Monitor - No remedial work recommended

4 - Very Low Risk

Item: Ski Stepper
Manufacturer: Fresh Air Fitness
Surface Type: Grass Matrix Tiles
Item Quantity: 1
Equipment Compliance: Yes
Surface Area Compliance: Yes

Total Findings: 1



Finding 1

This item is satisfactory - no work required -



i 6 - Low Risk

Item: Double Air Walker
Manufacturer: Fresh Air Fitness
Surface Type: Grass Matrix Tiles
Item Quantity: 1
Equipment Compliance: No
Surface Area Compliance: Yes

Total Findings: 1



Finding 1

The tree canopy overhangs the equipment and is less than 2.0m away - Lift tree canopy to ensure a minimum clearance of 2.0m from the equipment

i 6 - Low Risk

Item: Cross Rider
Manufacturer: Fresh Air Fitness
Surface Type: Grass Matrix Tiles
Item Quantity: 1
Equipment Compliance: Yes
Surface Area Compliance: Yes

Total Findings: 1



Finding 1

The item is slightly loose in its foundations - Monitor for any further deterioration and repair as required



8 - Low Risk

Item: Air Skier
Manufacturer: Fresh Air Fitness
Surface Type: Grass Matrix Tiles
Item Quantity: 1
Equipment Compliance: No
Surface Area Compliance: Yes

Total Findings: 2



Finding 1

The swinging movement of the item exceeds the maximum 55 degrees from the vertical required by BS EN 16630 - Monitor - No remedial work recommended

Finding 2

There is minor damage to the hand grips - Monitor for any further damage and replace

6 - Low Risk

Item: Basket Ball Goal
Manufacturer: Not Identified
Surface Type: Tarmac
Item Quantity: 1
Equipment Compliance: Yes
Surface Area Compliance: N/A

Total Findings: 1



Finding 1

There are weeds/vegetation growth between or around the edges of the surfacing - Remove weeds/vegetation growth



Findings information

8 - Low Risk (Finding 1)

Item: Ancillary Items - Site General
Manufacturer: Owner/Operator

Risk Level: L - Low Risk
Surface: N/A



Finding: There are trip hazards present in the play area

Action: Reinstate surrounding surfaces to level to remove the trip points area

8 - Low Risk (Finding 2)

Item: Ancillary Items - Site General
Manufacturer: Owner/Operator

Risk Level: L - Low Risk
Surface: N/A



Finding: It is recommended that Adult Outdoor Fitness equipment is installed a minimum of 25m away from a childrens playground or separated and screened to discourage access by younger children

Action: Monitor use and review risk assessment regularly



i 5 - Very Low Risk (Finding 1)

Item: Ancillary Items - Sign
Manufacturer: Owner/Operator

Risk Level: V - Very Low Risk
Surface: N/A



Finding: BS EN 1176 Part 7 recommends that signage shall include the site name / address
Action: Provide additional information

i 0 - Risk Assessment not Undertaken (Finding 1)

Item: Ancillary Items - Litter Bin
Manufacturer: Owner/Operator

Risk Level: N - Risk Assessment not Undertaken
Surface: N/A



Finding: Bins were cordoned off at the time of inspection and the inspector was unable to make a full assessment

Action: Ensure the bin is inspected/emptied as required



i 5 - Very Low Risk (Finding 1)

Item: Swings - Single Point Swing - Type 3
Manufacturer: Wicksteed Playgrounds

Risk Level: V - Very Low Risk
Surface: Rubber Tiles



Finding: The surfacing dimensions are short and do not meet with the requirements of the current applicable standard

Action: Monitor - no remedial action recommended

i 4 - Very Low Risk (Finding 1)

Item: Swings - 1 Bay 2 Seat (Cradle)
Manufacturer: Sutcliffe Play Limited

Risk Level: V - Very Low Risk
Surface: Rubber Tiles



Finding: Bird muck is present on the seats

Action: Clear the muck and maintain



i 6 - Low Risk (Finding 2)

Item: Swings - 1 Bay 2 Seat (Cradle)
Manufacturer: Sutcliffe Play Limited

Risk Level: L - Low Risk
Surface: Rubber Tiles



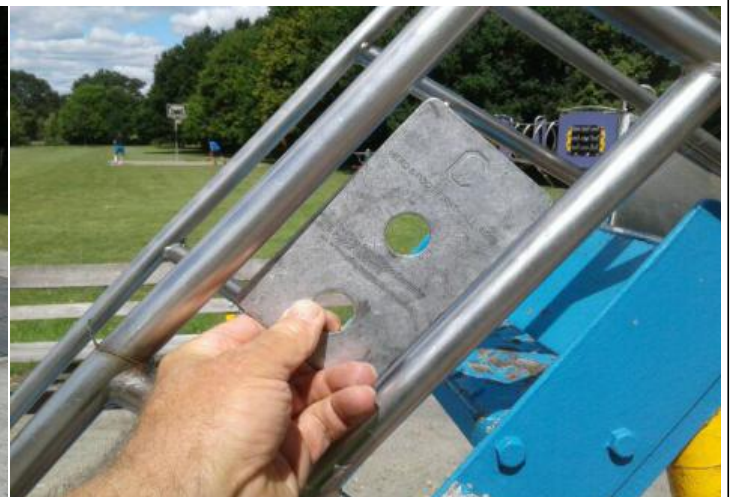
Finding: There are caps missing from the underside of the seats

Action: Replace missing caps under the seats

i 5 - Very Low Risk (Finding 1)

Item: Other - Free Standing Slide
Manufacturer: Not Identified

Risk Level: V - Very Low Risk
Surface: Rubber Tiles



Finding: The item fails to meet the requirements of BS EN 1176 Part 1 4.2.7.2 head and neck entrapment in the barriers and/or steps

Action: Monitor - No remedial work recommended



i 4 - Very Low Risk (Finding 2)

Item: Other - Free Standing Slide
Manufacturer: Not Identified

Risk Level: V - Very Low Risk
Surface: Rubber Tiles



Finding: The height of the barrier(s) is insufficient and fails to meet the recommendations of BS EN 1176 Part 1

Action: Monitor - No remedial work recommended

i 10 - Low Risk (Finding 3)

Item: Other - Free Standing Slide
Manufacturer: Not Identified

Risk Level: L - Low Risk
Surface: Rubber Tiles



Finding: The surfacing dimensions are significantly short and do not meet with the requirements of the current applicable standard (1500mm required / 700mm provided)

Action: Extend surface area to comply



i 6 - Low Risk (Finding 4)

Item: Other - Free Standing Slide
Manufacturer: Not Identified

Risk Level: L - Low Risk
Surface: Rubber Tiles



Finding: There is surface corrosion present on the item

Action: Consider treating the item

i 8 - Low Risk (Finding 1)

Item: Activity Equipment - Multi Play (Junior)
Manufacturer: Playdale Playgrounds Ltd

Risk Level: L - Low Risk
Surface: Grass Matrix Tiles



Finding: There is algae or moss on the surface of the equipment

Action: Clean and treat appropriately



i 8 - Low Risk (Finding 2)

Item: Activity Equipment - Multi Play (Junior)
Manufacturer: Playdale Playgrounds Ltd

Risk Level: L - Low Risk
Surface: Grass Matrix Tiles



Finding: The grass mats are silted up and the soil is compacted; this may have an effect on the impact absorbing properties of the surface

Action: Consider HIC testing impact absorbing properties to ensure the correct surface qualities are maintained for the equipment and replace as required

i 8 - Low Risk (Finding 1)

Item: Rotor Play - Spinning Pole
Manufacturer: Playdale Playgrounds Ltd

Risk Level: L - Low Risk
Surface: Grass Matrix Tiles



Finding: The grass mats are silted up, the soil is compacted and the area will become very slippery when the soil is wet.

Action: Reinstate as required



i 8 - Low Risk (Finding 1)

Item: Outdoor Fitness Equipment - Waist Twister **Risk Level:** L - Low Risk
Manufacturer: Fresh Air Fitness **Surface:** Grass Matrix Tiles



Finding: The deflection of the rotating user station exceeds the maximum 105 degrees required by BS EN 16630 **Action:** Monitor - No remedial work recommended

i 8 - Low Risk (Finding 2)

Item: Outdoor Fitness Equipment - Waist Twister **Risk Level:** L - Low Risk
Manufacturer: Fresh Air Fitness **Surface:** Grass Matrix Tiles



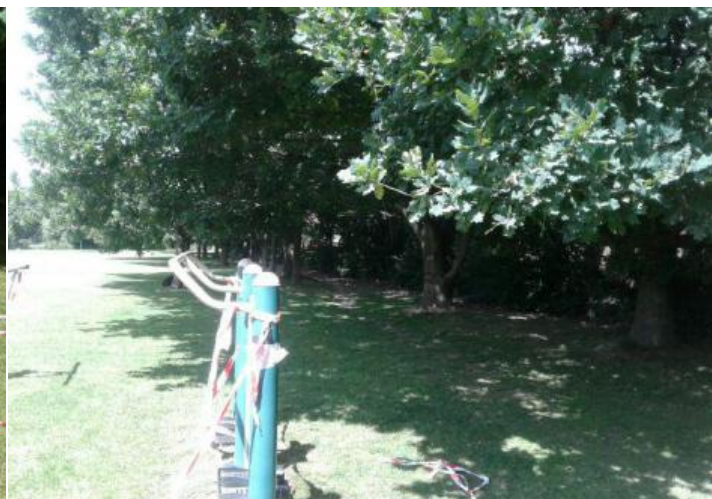
Finding: The swinging movement of the item exceeds the maximum 55 degrees from the vertical required by BS EN 16630 **Action:** Monitor - No remedial work recommended



i 6 - Low Risk (Finding 1)

Item: Outdoor Fitness Equipment - Double Air Walker
Manufacturer: Fresh Air Fitness

Risk Level: L - Low Risk
Surface: Grass Matrix Tiles



Finding: The tree canopy overhangs the equipment and is less than 2.0m away

Action: Lift tree canopy to ensure a minimum clearance of 2.0m from the equipment

i 6 - Low Risk (Finding 1)

Item: Outdoor Fitness Equipment - Cross Rider
Manufacturer: Fresh Air Fitness

Risk Level: L - Low Risk
Surface: Grass Matrix Tiles



Finding: The item is slightly loose in its foundations

Action: Monitor for any further deterioration and repair as required



i 8 - Low Risk (Finding 1)

Item: Outdoor Fitness Equipment - Air Skier
Manufacturer: Fresh Air Fitness

Risk Level: L - Low Risk
Surface: Grass Matrix Tiles



Finding: The swinging movement of the item exceeds the maximum 55 degrees from the vertical required by BS EN 16630

Action: Monitor - No remedial work recommended

i 4 - Very Low Risk (Finding 2)

Item: Outdoor Fitness Equipment - Air Skier
Manufacturer: Fresh Air Fitness

Risk Level: V - Very Low Risk
Surface: Grass Matrix Tiles



Finding: There is minor damage to the hand grips

Action: Monitor for any further damage and replace



i 6 - Low Risk (Finding 1)

Item: Multi Use Games Area - Basket Ball Goal
Manufacturer: Not Identified

Risk Level: L - Low Risk
Surface: Tarmac



Finding: There are weeds/vegetation growth between or around the edges of the surfacing

Action: Remove weeds/vegetation growth